

ABWAX[®] Sunflower Pearls

Sustainable wax from vegetal origin

Texture and consistency agent

Easy-to-use pearl form



Brasca
Don't follow. Lead.

ABWAX® Sunflower Pearls

Features

INCI	Helianthus annuus seed cera / Helianthus annuus seed wax
APPEARANCE	Waxy solid in pearls
COLOR	Pale yellow
ODOR	Characteristic
DROP POINT (°C)	75-80

- HIGH MELTING POINT
- GOOD EMOLLIENT POWER
- EXCELLENT OIL ABSORPTION POWER
- THICKENER AND CONSISTENCY AGENT
- HIGH STRUCTURING PROPERTIES

Background

The ABWAX® VIRIDIS line is a line of waxes for cosmetic applications developed to create **sustainable alternatives** to classic natural waxes.

ABWAX® SUNFLOWER PEARLS is derived from sustainable and renewable sources, as result of a **transparent and ethical supply chain**, involving non-edible fraction of sunflower seed oil process, noble **by-products** as, in the light of the adoption of circular economy model.

General information

ABWAX® SUNFLOWER PEARLS is a natural wax of **vegetable origin** with a high melting point and good emollient power. In finished formulas, it does not show any impact on the organoleptic properties. Being a wax of natural origin, it is exempt from REACH registration.

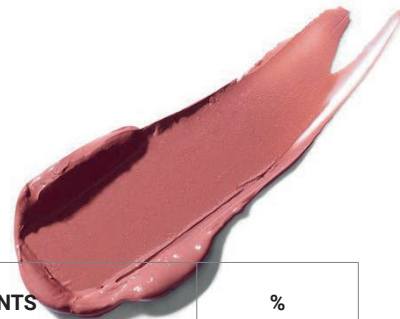
ABWAX® SUNFLOWER WAX has been tested in different categories of formulations:

- Emulsions*: thickener and consistency agent;
- Anhydrous products*: **excellent oil absorption power** and high structuring power, maintaining excellent plasticity.



FORMULATION TEST

Flora stick



PHASE	COMMERCIAL NAME	INCI / INGREDIENTS	%
A	EMotion® Light	Tripelargonin	13,00
	Olifeel® Pearls	C10-18 Triglycerides	15,00
	Castor Oil	Ricinus Communis (Castor) Seed Oil	38,70
	ABWAX® SUNFLOWER PEARLS	Helianthus Annuus Seed Cera	15,00
	Aminote Naturals Flower	Triolein, Glyceril Dioleate, Pelargonium Graveolens Oil, Canaga Odorata Flower Oil, Lavandula Angustifolia Flower Oil, Citrus Aurantium Bergamia Peel Oil, Cymbopogon Winterianus Herb Oil, Jasminum Frandiflorum Flower Extract, Viola Odorata Flower Extract	10,00
	Celus-Bi® Feel 5	Zea Mays Starch (and) Polyvinyl Alcohol (and) Glycerin	7,00
	TechnoHYAL HyaPearl	C10-18 Triglycerides, Sodium Hyaluronate, Triolein, Glyceril Dioleate	1,00
	Bioscontrol® Element IM	o-cymen-5-ol	0,10
	amiPearl® 2 Tones Violet Blue	CI 77891, Mica, CI 77007, Tin oxide	0,20

Sole Concealer



PHASE	COMMERCIAL NAME	INCI / INGREDIENTS	%
A	EMotion® Light	Tripelargonin	32,89
	Olifeel® Skin	Triolein, Glyceril Dioleate	21,40
	Castor Oil	Ricinus Communis (Castor) Seed Oil	8,77
	ABWAX® SUNFLOWER PEARLS	Helianthus Annuus Seed Cera	13,16
	Titanium dioxide CI 77891 + EMotion® Light	CI 77891 + Tripelargonin	13,57
	Yellow iron oxide CI 77492 + EMotion® Light	CI 77492 + Tripelargonin	2,96
	Black iron oxide CI 77499 + EMotion® Light	CI 77499 + Tripelargonin	0,35
	Red iron oxide CI 77491 + EMotion® Light	CI 77491 + Tripelargonin	0,66
	Celus-Bi® Feel 10	Zea Mays Starch (and) Polyvinyl Alcohol (and) Glycerin	6,15
	Bioscontrol® Element IM	o-cymen-5-ol	0,09



DO NOT HESITATE TO CONTACT US.

For more info:

Phone: +39 02 3351 2243

Email: info@brasca.it

BRASCA INDUSTRIAL S.r.l.

Legal Office: Via M. Gonzaga, 7 - 20123 Milan (MI) Italy

Headquarter: Via Nerviano, 31 - 20045 Lainate (MI) Italy

Production plant & Logistics: Via Celeste Milani, 24/26 - 21040 Origgio (VA) Italy