

ABWAX[®] Revowax

Sustainable wax with **vegan friendly natural ingredients**

Plastic-free formulation

Excellent **structuring wax** and **viscosity modifier**



Brasca
Don't follow. Lead.

DO NOT HESITATE TO CONTACT US.

For more info:
Phone: +39 02 3351 2243
Email: info@brasca.it

BRASCA INDUSTRIAL S.r.l.
Legal Office: Via M. Gonzaga, 7 - 20123 Milan (MI) Italy
Headquarter: Via Nerviano, 31 - 20045 Lainate (MI) Italy
Production plant & Logistics: Via Celeste Milani, 24/26 - 21040 Origgio (VA) Italy



Features

INCI	Helianthus Annuus Seed Cera, Hydrogenated Castor Oil
FUNCTION	Natural
ORIGIN	Structuring Wax
MELTING POINT (°C)	74-80
DROP POINT (°C)	81-86

- HIGH OIL ABSORPTION
- EXCELLENT STRUCTURING WAX
- VISCOSITY MODIFIER
- SIMILAR PERFORMANCES TO PLASTIC WAXES
- PLASTIC-FREE

Background

One of Brasca's strength lies in its **tradition** to use already known technologies in order to propose **innovative solutions**, able to satisfy both the demand for quality, as well as the need for **sustainable and environmental-friendly products**.

Our attention to the environment and our will to produce alternative solutions that respect our planet brought us to design a line of products with the aim of facing microplastics pollution in the oceans, which is among the six most dangerous emerging environmental threats in the world. Polymers that are intentionally added to products and that release microplastics in the environment are being regulated, with the aim of finding **alternative sustainable solutions**.

General information

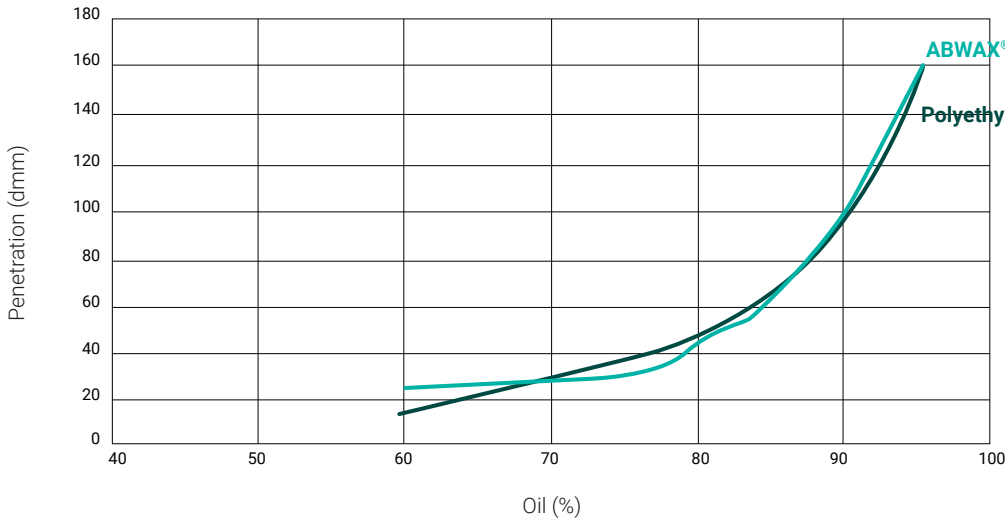
ABWAX® Revowax is a line designed with the idea of developing high-performance raw materials for a **plastic-free formulation**. This line is composed by functional and vegan friendly natural ingredients that allow formulators to develop cutting-edge products, avoiding the intentional use of plastic-derived waxes. It is designed to be a **green alternative** to plastic waxes in terms of absorption of oil, demonstrating excellent structuring and viscosity modifier properties.

As internal tests have shown, ABWAX® Revowax have similar performances when compared to plastic waxes, with analogous results for what regards drop point and melting point, with a **high heat stability**.

ABWAX® Revowax exhibited a high absorption of oil, as different tests and results conducted on many oils highlighted.

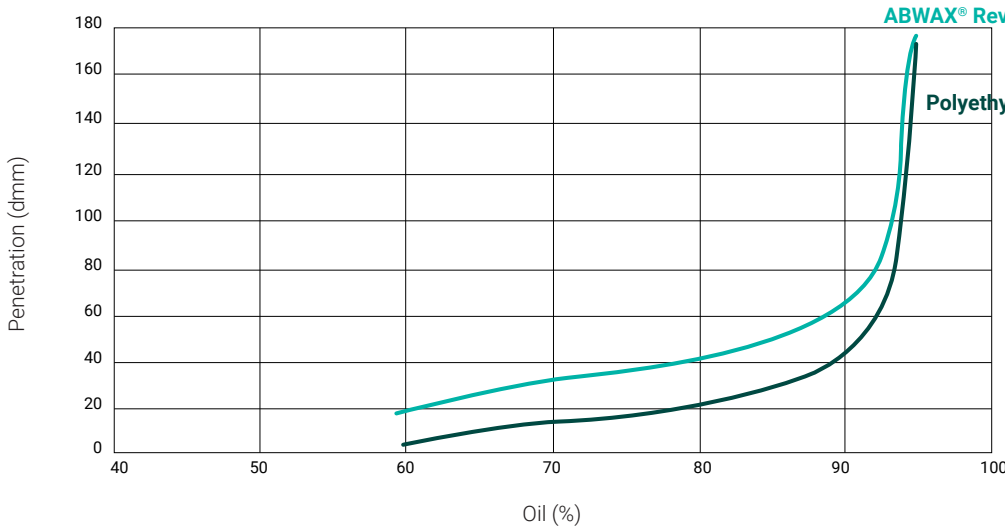


Caprylic/Capric Triglyceride



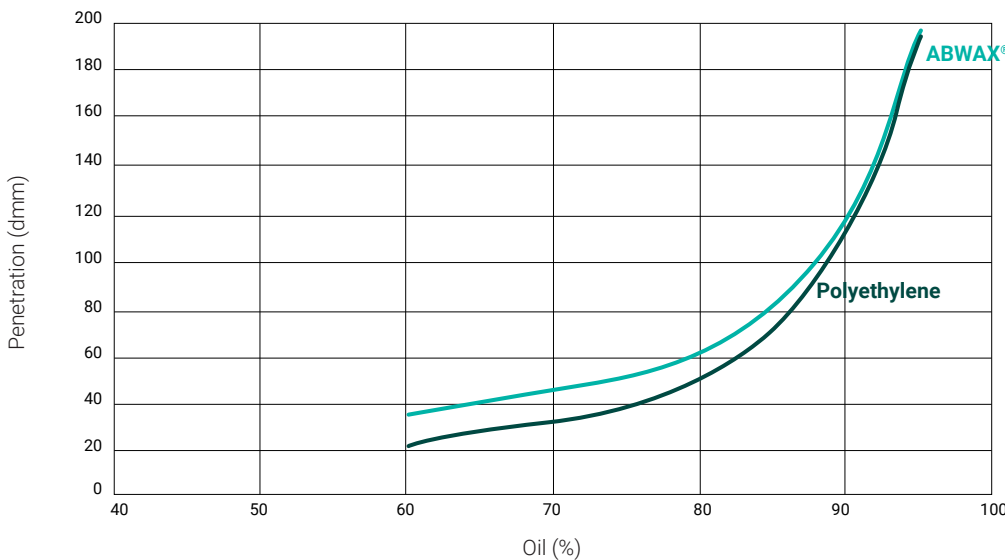
ABWAX® REVOWAX PENETRATION CURVE ON CAPRYLIC/CAPRIC TRIGLYCERIDE OIL SHOWS VERY SIMILAR RESULTS IN COMPARISON WITH POLYETHYLENE, TAKEN AS BENCHMARK FOR PLASTIC WAXES.

Castor Oil



ABWAX® REVOWAX PENETRATION CURVE ON CASTOR OIL SHOWS VERY SIMILAR RESULTS IN COMPARISON WITH POLYETHYLENE, TAKEN AS BENCHMARK FOR PLASTIC WAXES.

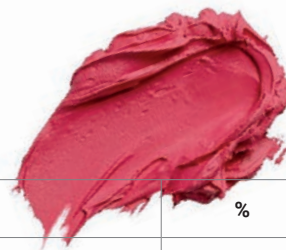
Tripelargonin



ABWAX® REVOWAX PENETRATION ON TRIPELARGONIN SHOWS VERY SIMILAR RESULTS IN COMPARISON WITH POLYETHYLENE, TAKEN AS BENCHMARK FOR PLASTIC WAXES.

FORMULATION TEST

Midnight lipstick



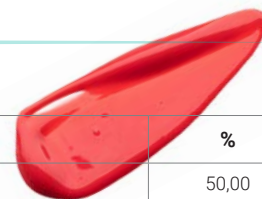
PHASE	INCI name	INGREDIENTS	%
A	Isostearyl Isostearate	ISIS	34,90
	Polyglyceryl-3 Diisostearate	Risorex PGIS32	10,00
	Ricinus communis seed oil	Castor Oil	20,00
	Helianthus Annuus Seed Cera, Hydrogenated Castor Oil	ABWAX® REVOWAX	15,00
	C10-18 Triglycerides	Olifeel® Pearls	5,00
	C.I. 15850:1 + Tripelargonin	Red 7 lake + Tripelargonin	15,00
B	o-cymen-5-ol	Bioscontrol® Element IM	0,10
			100,00

MATTE ●●●○ GLOSSY

RESTRAIN ●●●○ FLUID

LOW COLOR RELEASE ●●●● HIGH COLOR RELEASE

Ultimate kiss



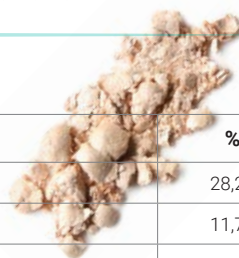
PHASE	INCI name	INGREDIENTS	%
A	Triolein, Glyceryl Dioleate	Olifeel® Glow	50,00
	Helianthus Annuus Seed Cera, Hydrogenated Castor Oil	ABWAX® REVOWAX	5,00
	C.I. 15850:1 + Tripelargonin	Red 7 lake + EMotion® Light	4,50
	Glyceryl Hydrogenated Rosinate (And) Caprylic/Capric Triglyceride	Koboguard Natural 2063 CCT	7,50
	Tocopheryl Acetate	-	0,30
B	Triolein, Glyceryl Dioleate	Olifeel® Skin	1,00
	Ethyl vanillin	-	0,20
C	Isododecane	-	24,00
	Trimethyl Siloxy Silicate	-	7,50
			100,00

MATTE ●●●○ GLOSSY

RESTRAIN ●●●○ FLUID

LOW COLOR RELEASE ●●●○ HIGH COLOR RELEASE

Brightening dust



PHASE	INCI name	INGREDIENTS	%
A	Ethylhexyl Pelargonate	Beausens Air	28,20
	Polyglyceryl-2 Diisostearate	Risorex PGIS22	11,70
	Polyglyceryl-2 Isostearate/Dimer Dilinoaleate Copolymer	Hailucent ISDA	2,90
	Helianthus Annuus Seed Cera, Hydrogenated Castor Oil	ABWAX® REVOWAX	12,60
	Rhus Succedanea Fruit Cera, Glyceryl Stearate, Stearic Acid, Helianthus Annuus Seed Cera	ABWAX® MIMIC BEESWAX MK	5,80
	C15-19 Alkane (and) Hydrogenated Polyfarnesene	-	15,30
B	Silica	-	3,90
C	Calcium Aluminium Borosilicate, CI 77891, Tin Oxide	amiPearl® Magic Mirror Bright Red Sparkle	4,90
	Calcium Aluminium Borosilicate, CI 77891, Tin Oxide	amiPearl® Magic Mirror Bright Violet Sparkle	4,90
	Calcium Aluminium Borosilicate, CI 77891, Tin Oxide	amiPearl® Magic Mirror Bright White Sparkle	2,90
	Mica, Silica, CI 77891, Tin Oxide	amiPearl® Chamaleon 45279 Green Blue	2,90
	Synthetic Fluorophlogopite, CI 77891, Tin Oxide	amiPearl® Bohemian CHC701C White Penguin	4,00
			100,00

MATTE ●●●○ GLOSSY

RESTRAIN ●●○○○ FLUID

LOW COLOR RELEASE ●●●○○ HIGH COLOR RELEASE