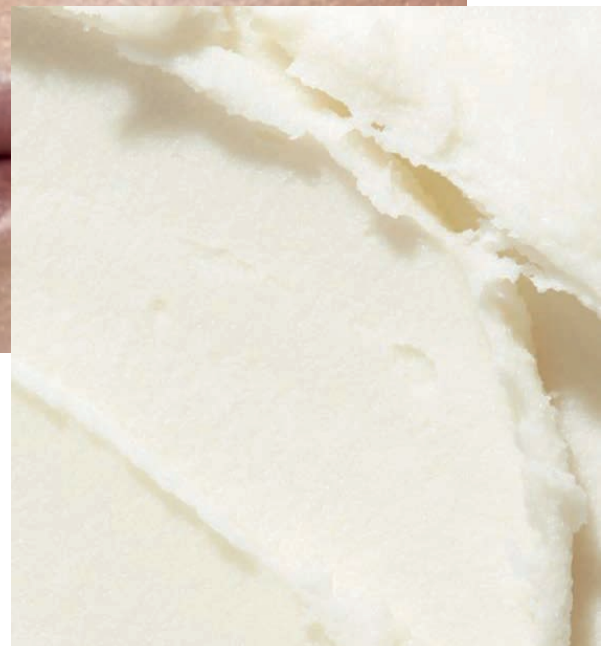


ABWAX[®] Mimic Carnauba

Excellent **structuring** wax

High **heat stability**

Ethical and **sustainable** alternative



ABWAX[®] Mimic Carnauba

Features

INCI	Oryza Sativa Cera, Hydrogenated Castor Oil, C10-C18 Triglycerides
APPEARANCE	Waxy solid in pearls
COLOR	From white to pale yellow
ODOR	Characteristic
DROP POINT (°C)	80-87

- **100% RENEWABLE RAW MATERIALS**
- **HIGHLY PERFORMING WAX**
- **HIGH STABILITY**
- **REDUCED ENVIRONMENTAL IMPACT**
- **100% NATURAL AND VEGAN ORIGIN**



Background

Brasca's way of working has always been characterised by the milestone of the **100% resources used**, that merge with the will of designing and proposing ever more innovative and **sustainable solutions**, bringing **better results** whilst reducing the environmental impact on the planet.

ABWAX[®] MIMIC CARNAUBA is thought and designed to be an **ethical and innovative alternative** to Carnauba Wax, maintaining at the same time its sustainability and green features.

General information

ABWAX[®] MIMIC CARNAUBA is a **highly-performing** product, thanks to its colour that varies from white to pale yellow, giving this wax a shade easily modifiable in formulations. Thanks to the ground-breaking **mimic approach**, ABWAX[®] MIMIC CARNAUBA is able to replicate the benefits and results of a known technology, improving its performances while preserving planet's resources and environment.

ABWAX[®] MIMIC CARNAUBA shows a thermal behavior that allows it to **resist to high temperatures**. In formulations, it has **excellent structuring properties** with different oils. In finished products, it is able to give an extraordinary and shiny gloss effect.

FORMULATION

Sunday Brunch Lipstick



PHASE	COMMERCIAL NAME	INCI / INGREDIENTS	%
A	Castor Oil	Ricinus communis seed oil	25
	ABWAX® REVOWAX	Helianthus Annus Seed Cera, Hydrogenated Castor Oil	12
	ABWAX® MIMIC CARNAUBA	Oryza Sativa Cera, Hydrogenated Castor Oil, C10-C18 Triglycerides	6
	Red iron oxide CI 77491 + Squalane	CI 77491, Squalane	15
	BeauSens® Air	Ethylhexyl Pelargonate	19
	Olifeel® Skin	Triolein, Glyceryl Dioleate	20
	Celus-Bi® Feel 10	Zea Mays Starch (and) Polyvinyl Alcohol (and) Glycerin	3

Essential foundation



PHASE	COMMERCIAL NAME	INCI / INGREDIENTS	%
A	Olifeel® Skin	Triolein, Glyceryl Dioleate	18,56
	ABWAX® SUNFLOWER PEARLS	Helianthus Annus Seed Cera	9,62
	EMotion® Light	Tripelargonin	40,87
	ABWAX® MIMIC CARNAUBA	Oryza Sativa Cera, Hydrogenated Castor Oil, C10-C18 Triglycerides	7,69
	Titanium dioxide CI 77891 + EMotion® Light	CI 77891, Tripelargonin	16,39
	Red iron oxide CI 77491 + EMotion® Light	CI 77491, Tripelargonin	0,43
	Black iron oxide CI 77499 + EMotion® Light	CI 77499, Tripelargonin	0,25
	Yellow iron oxide CI 77492 + EMotion® Light	CI 77492, Tripelargonin	2,15
	Celus-Bi® Feel 10	Zea Mays Starch (and) Polyvinyl Alcohol (and) Glycerin	3,85
	Bioscontrol® element IM	o-cymen-5-ol	0,1

The following guide-line gives instruction to use Brasca raw materials. Although it has been developed at the best of our knowledge and experience, Brasca doesn't take any responsibility about the formula and cannot guarantee its stability. The respect of all rules involved in the usage of the product is under Customer direct responsibility.



DO NOT HESITATE TO CONTACT US.

For more info:

Phone: +39 02 3351 2243

Email: info@brasca.it

BRASCA INDUSTRIAL S.r.l.

Legal Office: Via M. Gonzaga, 7 - 20123 Milan (MI) Italy

Headquarter: Via Nerviano, 31 - 20045 Lainate (MI) Italy

Production plant & Logistics: Via Celeste Milani, 24/26 - 21040 Origgio (VA) Italy