

# ABWAX<sup>®</sup> Mimic Beeswax

*Vegan friendly alternative to Beeswax*

*Better absorption rate in stick formulations*

*No animal derived raw materials*



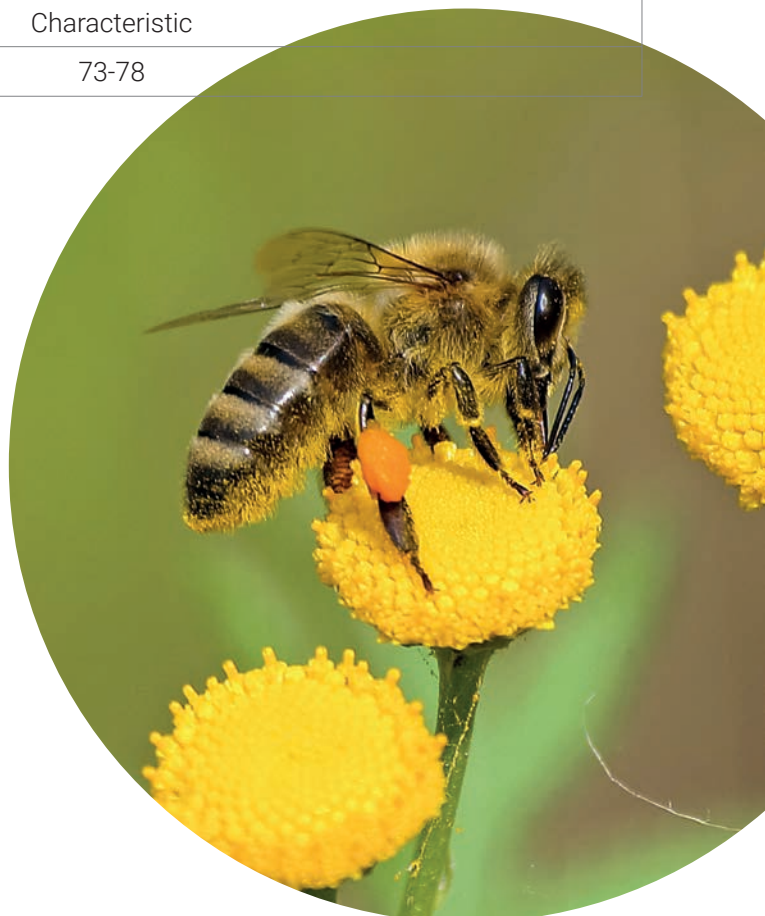
**Brasca**  
Don't follow. Lead.

# ABWAX® Mimic Beeswax

## Features

INCI	Oryza Sativa (Rice) Cera (Wax), Rhus Succedanea Fruit Cera, Shorea Robusta Resin, Squalene
APPEARANCE	Waxy solid in pearls
COLOR	Ivory
ODOR	Characteristic
DROP POINT (°C)	73-78

- STRUCTURING WAX
- TEXTURIZING FEATURES
- 100% VEGETABLE ORIGIN
- THICKENING AND FILM-FORMING PROPERTIES
- EASY-TO-USE PEARL FORM



## Background

ABWAX® MIMIC Line aims at creating **ethical choices for sustainable formulas**, where the wealth of Nature is kept to protect inner nobility.

It is developed only using **renewable and sustainable raw materials** designed to reach high excellence in performance.

## General information

Resulting from Brasca's long-standing expertise in wax technology, ABWAX® MIMIC BEESWAX is the best **vegetable-derived alternative to Beeswax**, specifically formulated to provide outstanding performance in a wide variety of cosmetic and personal-care products.

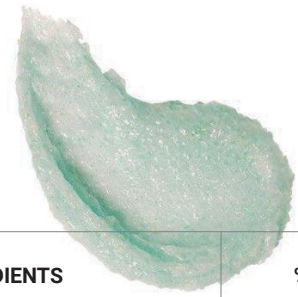
ABWAX® MIMIC BEESWAX is exempted from REACH Registration, because it is made of **natural ingredients**.

It has been tested in several formulas, including, amongst others, lip balms, creams and butters, showing comparable performances to Beeswax:

- *Lip balms*: spreadability, skin feel and drop point;
- *Creams*: spreadability and skin feel;
- *Butters*: softening point and skin feel.

# FORMULATION TEST

## *Cucumber body scrub*



PHASE	COMMERCIAL NAME	INCI / INGREDIENTS	%
A	-	Glycerin	34,48
	BeauSens® PG4	Polyglyceryl-4 Pelargonate	17,73
B	Olifeel® Skin	Triolein, Glyceryl Dioleate	9,85
	<b>ABWAX® MIMIC BEESWAX</b>	<b>Oryza Sativa (Rice) Cera (Wax), Rhus Succedanea Fruit Cera, Shorea Robusta Resin, Squalene</b>	<b>4,93</b>
	BeauSens® Air	Ethylhexyl Pelargonate	12,02
C	amiPearl® sea 1156 Jade Green	CI 77891 (Titanium dioxide) (and) Mica (and) Tin oxide (and) 0177288	0,20
	Cucumber Perfume	Parfume (and) Benzyl salicylate (and) Hexyl cinnamal (and) Coumarin	0,99
D	-	Fructose	19,70
E	Bioscontrol® Element IM	o-cymen-5-ol	0,10





**DO NOT HESITATE TO CONTACT US.**

For more info:

Phone: +39 02 3351 2243

Email: [info@brasca.it](mailto:info@brasca.it)

BRASCA INDUSTRIAL S.r.l.

Legal Office: Via M. Gonzaga, 7 - 20123 Milan (MI) Italy

Headquarter: Via Nerviano, 31 - 20045 Lainate (MI) Italy

Production plant & Logistics: Via Celeste Milani, 24/26 - 21040 Origgio (VA) Italy